

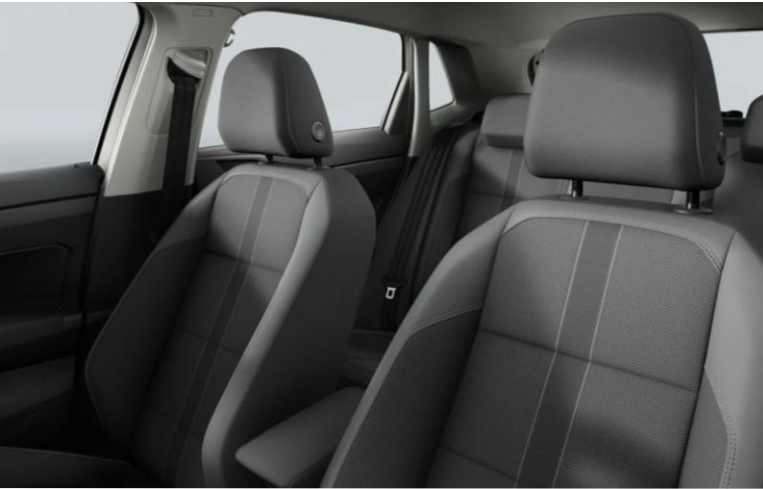


Polo

May 2026



Discover your Polo.



Discover more at [volkswagen.ie](https://www.volkswagen.ie)





Discover the trimline for you.

Petrol

| Model Code | Model Description | Engine/Transmission | CO ₂ | VRT ₂ | Consumption ₂ | Annual Road Tax ₁ | RRP ₃ | Delivery & Service | ROTR* |
|------------|-------------------|---------------------|-----------------|------------------|--------------------------|------------------------------|------------------|--------------------|---------|
| AE12GV | Polo | 1.0 MPI 80HP MT | 119 | 16.00% | 5.2 | €190 | €24,780 | €2,040 | €26,820 |
| AE13AV | Polo Life | 1.0 TSI 95HP MT | 116 | 16.00% | 5.1 | €190 | €26,370 | €2,040 | €28,410 |
| AE13AZ | Polo Life | 1.0 TSI 95HP AT | 121 | 16.75% | 5.3 | €200 | €28,625 | €2,040 | €30,665 |
| AE13AV | Polo Edition 75 | 1.0 TSI 95HP MT | 116 | 16.00% | 5.1 | €190 | €26,570 | €2,040 | €28,610 |
| AE13AZ | Polo Edition 75 | 1.0 TSI 95HP AT | 121 | 16.75% | 5.3 | €200 | €28,825 | €2,040 | €30,865 |
| AE14AV | Polo Style | 1.0 TSI 95HP MT | 117 | 16.00% | 5.1 | €190 | €29,780 | €2,040 | €31,820 |
| AE14AZ | Polo Style | 1.0 TSI 95HP AT | 122 | 16.75% | 5.4 | €200 | €32,030 | €2,040 | €34,070 |
| AE15AV | Polo R-Line | 1.0 TSI 95HP MT | 117 | 16.00% | 5.1 | €190 | €28,545 | €2,040 | €30,585 |
| AE15AZ | Polo R-Line | 1.0 TSI 95HP AT | 122 | 16.75% | 5.4 | €200 | €30,795 | €2,040 | €32,835 |
| AE15AV | Polo R-Line 75 | 1.0 TSI 95HPMT | 123 | 16.75% | 5.4 | €200 | €29,295 | €2,040 | €31,335 |
| AE15AZ | Polo R-Line 75 | 1.0 TSI 95HPAT | 128 | 17.50% | 5.6 | €200 | €31,545 | €2,040 | €33,585 |

- (1) VRT Bands and rate of Annual Road Tax are valid as of 1st January 2022 and calculated from the base model WLTP values for model year 2026 cars produced from CW48/2025 onwards. All vehicles with TBC are subject to EU type approval and with that were not available at time of going to print.
- (2) The specified fuel consumption and emission values are the official figures obtained from tests under standardised EU test conditions in accordance with the Worldwide Harmonized Light Vehicles Test Procedure (WLTP). The above values reflect the standard vehicle excluding additional equipment such as optional extras and accessories which may have an effect on the fuel consumption (l/100km) and CO₂ emissions produced. WLTP range values for standard vehicles may vary depending on equipment. In practice, the actual range varies depending on driving style, speed, use of convenience/ auxiliary equipment, outside temperature, number of passengers/additional load, and topography. To discover exact values please configure your desired vehicle at volkswagen.ie/build. You can discover more about the WLTP at volkswagen.ie/wltp.
- (3) All prices (Retail, Delivery & ROTR) are recommended by Volkswagen Ireland. €2,040 includes optional Service Plan which can be removed upon request. Maximum delivery charge with Service Plan removed is €1,125. *Recommended On the Road Price. The new Service Plan is applicable to 261 registrations only.
- Importantly note that the rate at which your vehicle pays Vehicle Registration Tax may increase as a result of your vehicle configuration. For more information, please consult your local Authorised Volkswagen retailer.
 - In accordance with (EU) 2020/740 ("Tire Labeling Regulation"), please visit volkswagen.ie configurator for details relating to the tyres applicable to said vehicles.
 - Please note every effort has been made to ensure the contents of this publication (including RRP, CO₂, fuel consumption and technical information) were accurate and up-to-date upon publishing on May 20th 2026. Volkswagen Ireland reserves the right to change specification, prices and withdraw products from sale without notice. Any such alternations will be notified to Volkswagen Retailers at the earliest opportunity. Please consult your local Authorised Volkswagen retailer for the latest product information.
 - 3 Years Tyre Insurance covers tyres that are damaged by an Insured Event. Exclusions do apply. For more information on general terms and conditions, please visit volkswagen.ie



Discover the trimline for you. Discover more at [volkswagen.ie](https://www.volkswagen.ie)

Life

All below specification is added to Life trimline for an incredible price

(in addition to Base)

- Comfort seats in front with lumbar support
- Leather-wrapped multifunction steering wheel, handbrake lever and Gear Shift Knob
- Decorative inserts in "Lava Stone Black"
- Front fog lamps and cornering light
- Chrome Package
- Exterior mirrors, power-adjustable, folding and heated
- App-Connect for Apple CarPlay and Android Auto
- Smartphone wireless charging



Edition 75

All below specification is added to the Edition 75 trimline for an incredible price

(in addition to Life)

- Rear View Camera
- Rear Tinted Windows





Discover the trimline for you. Discover more at [volkswagen.ie](https://www.volkswagen.ie)

Style

All below specification is added to Style trimline for an incredible price

(in addition to Life)

- Sports Comfort seats in front with lumbar support
- Fabric seat trim covers in "Black Slush" design for Style
- Decorative inserts in "Deep Iron Grey"
- Ambient lighting
- Upgraded Chrome Package
- 8" "Discover Media" navigation system with a clear glass screen and 6 speakers
- Illuminated light bar between headlights
- LED Matrix Headlights with IQ.LIGHT incl. "Dynamic Light Assist"
- Adaptive Cruise Control system
- Park distance control in front and rear
- Rear view camera



R-Line

All below specification is added to the R-Line trimline for an incredible price

(in addition to Life)

- Sports Comfort seats in front with lumbar support
- ArtVelours seat trim covers in "Karaso"
- R-Line interior trim
- R-Line specific decorative inserts in matte "Adonized Grey"
- Pedals in brushed stainless steel
- Ambient lighting
- 16" 'Coventry' alloy wheels, black diamond-turned surface
- R-Line body styling with R-Line bumpers
- 8" Ready2Discover Infotainment system
- Adaptive Cruise Control system incl
- Park Distance Control front and rear
- Rear view camera





Discover the trimline for you. Discover more at [volkswagen.ie](https://www.volkswagen.ie)

R-Line 75

All below specification is added to R-Line 75 trimline for an incredible price

(in addition to R-Line)

- 17" York' Alloy Wheels
- Tinted Rear Windows
- Driver Assistance Pack
- Wireless Charging
- Light & Vision Package
- Metallic Paint



Discover the trimline for you.



Standard ● Optional ○ Unavailable -

| | Base | Life | Edition 75 | Style | R-Line | R-Line 75 |
|--|------|------|------------|-------|--------|-----------|
| Interior Equipment | | | | | | |
| Decorative inserts "Licorice Black" for dashboard and front door trim panels | ● | ● | ● | ● | ● | ● |
| Inserts of front seats and outer rear seats in fabric | ● | ● | ● | - | ● | ● |
| Multifunction steering wheel | ● | - | - | - | - | - |
| Leather-wrapped multifunction steering wheel | - | ● | ● | ● | ● | ● |
| Manually adjustable lumbar support in front seats | ● | ● | ● | ● | ● | ● |
| Plastic handbrake lever | ● | - | - | - | - | - |
| Leather wrapped handbrake lever | - | ● | ● | ● | ● | ● |
| Plastic Gearshift Knob | - | - | - | - | - | - |
| Leather Gear Shift Knob | - | ● | ● | ● | ● | ● |
| Front seats with manual height adjustment | ● | ● | ● | ● | ● | ● |
| Unsplit rear bench, asymmetric backrest split folding | ● | ● | ● | ● | ● | ● |
| Map pockets on back of front seats | ● | ● | ● | ● | ● | ● |
| Luggage compartment lighting | ● | ● | ● | ● | ● | ● |
| Illuminated vanity mirrors in sun visors | ● | ● | ● | ● | ● | ● |
| Dimming interior rearview mirror | ● | ● | ● | ● | ● | ● |
| Instrument cluster with electronic speedometer, odometer and trip odometer | ● | ● | ● | ● | ● | ● |
| Electronic windows front and rear | ● | ● | ● | ● | ● | ● |
| Two interior lights in front and rear with switch-off delay and dimmer | ● | ● | ● | ● | ● | ● |
| Comfort seats in front with lumbar support | - | ● | ● | - | - | - |
| Decorative inserts in "Lava Stone Black" | - | ● | ● | - | ● | ● |
| Front centre armrest, longitudinally adjustable with storage compartment | - | ● | ● | ● | ● | ● |
| Sports Comfort seats in front with lumbar support | - | - | - | ● | ● | ● |
| Fabric seat trim covers in "Black Slush" design for Style | - | - | - | ● | - | - |
| Decorative inserts in "Deep Iron Grey" | - | - | - | ● | - | - |
| Carpet mats in front and rear made from recycled material | - | - | - | ● | ● | ● |
| Ambient lighting | - | - | - | ● | ● | ● |
| ArtVelours seat trim covers in "Karaso" | - | - | - | ● | ● | ● |
| R-Line interior trim | - | - | - | - | ● | ● |
| R-Line specific decorative inserts in matte "Adonized Grey" | - | - | - | - | ● | ● |
| Black headliner made from recycled material | - | - | - | - | ● | ● |
| Pedals in brushed stainless steel | - | - | - | - | ● | ● |

| | Base | Life | Edition 75 | Style | R-Line | R-Line 75 |
|--|------|------|------------|-------|--------|-----------|
| Functional Equipment | | | | | | |
| 8" Entry Radio system with 4 speakers | ● | ● | ● | ● | ● | ● |
| 8" "Discover Media" navigation system with a clear glass screen and 6 speakers | - | - | - | ● | - | - |
| 8" Ready2Discover Infotainment system | - | - | - | - | ● | ● |
| Multi-Colour Digital Cockpit | ● | ● | ● | ● | ● | ● |
| 2 USB-C ports in the front charging capacity up to 45W | ● | ● | ● | ● | ● | ● |
| Digital radio reception DAB+ | ● | ● | ● | ● | ● | ● |
| Multifunction camera for "Front Assist" | ● | ● | ● | ● | ● | ● |
| Forward collision warning "Front Assist" with autonomous emergency braking | ● | ● | ● | ● | ● | ● |
| Speed limiter | ● | ● | ● | ● | ● | ● |
| Pedestrian and cyclist monitoring | ● | ● | ● | ● | ● | ● |
| Lane keeping system Lane Assist | ● | ● | ● | ● | ● | ● |
| Automatic headlight control with exit and entry lighting | ● | ● | ● | ● | ● | ● |
| Headlight range control | ● | ● | ● | ● | ● | ● |
| Air conditioning system with enhanced air filter | ● | ● | ● | ● | ● | ● |
| Standard climatic zones | ● | ● | ● | ● | ● | ● |
| Tyre mobility kit | ● | ● | ● | ● | ● | ● |
| Wash fluid level indicator | ● | ● | ● | ● | ● | ● |
| Windshield wiper in front with intermittent control | ● | ● | ● | ● | ● | ● |
| Rear window wiper with intermittent control | ● | ● | ● | ● | ● | ● |
| Rear shock absorption | ● | ● | ● | ● | ● | ● |
| Height and longitudinally adjustable steering column | ● | ● | ● | ● | ● | ● |
| Power steering | ● | ● | ● | ● | ● | ● |
| Single tone horn | ● | ● | ● | ● | ● | ● |
| Start/stop technology with regenerative braking | ● | ● | ● | ● | ● | ● |
| App Connect | ● | ● | ● | ● | ● | ● |
| App-Connect for Apple CarPlay and Android Auto | - | ● | ● | ● | ● | ● |
| Central locking system without SAFELOCK and two remote control folding keys | ● | ● | ● | ● | ● | ● |
| Smartphone wireless charging | - | ● | ● | ● | ● | ● |
| 2 USB-C ports in the front, 2 USB-C on the center console charging capacity up to 45 W | - | ● | ● | ● | ● | ● |
| Diversity antenna for FM reception | - | - | - | ● | - | - |
| LED Matrix Headlights with IQ.LIGHT incl. "Dynamic Light Assist" | - | - | - | ● | - | - |
| Illuminated light bar between headlights | - | - | - | ● | - | - |
| LED taillights with dynamic turn signals | - | - | - | ● | - | - |
| Dynamic Headlight Range Control | - | - | - | ● | - | - |
| Travel Assist | - | - | - | ● | ● | ● |
| Adaptive Cruise Control system incl. speed limiter and Autonomous Emergency Braking | - | - | - | ● | ● | ● |
| Autonomous Emergency Braking Front Assist for ACC | - | - | - | ● | - | - |
| Park Distance Control | ● | ● | ● | ● | ● | ● |
| Rear Camera | - | - | ● | ● | ● | ● |
| Park distance control in front and rear | - | - | - | ● | - | - |
| Park Distance Control front and rear | - | - | - | - | ● | ● |
| Driver Assistance Pack | - | - | - | - | ● | ● |
| Light & Vision Package | - | - | - | - | ● | ● |

| | Base | Life | Edition 75 | Style | R-Line | R-Line 75 |
|--|------|------|------------|-------|--------|-----------|
| Exterior Equipment | | | | | | |
| Power adjustable exterior mirrors, heated | ● | ● | ● | ● | ● | ● |
| Rear fog lamp | ● | ● | ● | ● | ● | ● |
| LED headlamps with separate LED daytime running light | ● | ● | ● | ● | ● | ● |
| Rear LED combination lamp | ● | ● | ● | ● | ● | ● |
| Body-coloured exterior mirror housings and door handles | ● | ● | ● | ● | ● | ● |
| Body-coloured bumpers with radiator grille in chrome | ● | ● | ● | ● | ● | ● |
| Heat-insulated laminated safety glass in front windscreen | ● | ● | ● | ● | ● | ● |
| Front fog lamps and cornering light | - | ● | ● | ● | ● | ● |
| Chrome Package | - | ● | ● | ● | ● | ● |
| Exterior mirrors, power-adjustable, folding and heated | - | ● | ● | ● | ● | ● |
| Heat-insulating glass in sides and rear | ● | ● | ● | ● | ● | ● |
| Tinted Window | - | - | ● | - | - | ● |
| Upgraded Chrome Package | - | - | - | ● | - | - |
| R-Line body styling with R-Line bumpers | - | - | - | - | ● | ● |
| Scuff plates in front with R-Line logo | - | - | - | - | ● | ● |
| Metallic Paint | - | - | - | - | - | ● |
| Safety Equipment | | | | | | |
| Hill Start Assist | ● | ● | ● | ● | ● | ● |
| Electronic Stability Control | ● | ● | ● | ● | ● | ● |
| Driver's and front passenger's airbag with front passenger deactivation | ● | ● | ● | ● | ● | ● |
| Safety optimised front head restraints | ● | ● | ● | ● | ● | ● |
| 3-point seat belts in front with seat belt pretensioner for the outer rear seats | ● | ● | ● | ● | ● | ● |
| 3-point seat belt for centre rear seat | ● | ● | ● | ● | ● | ● |
| Curtain airbag system for front and rear passengers including front side airbags | ● | ● | ● | ● | ● | ● |
| ISOFIX anchorage points mounting fixtures for two child seats on rear bench and front passenger seat | ● | ● | ● | ● | ● | ● |
| Warning signal and warning light for front and rear seat belts not fastened | ● | ● | ● | ● | ● | ● |
| 3 head rests for rear seats | ● | ● | ● | ● | ● | ● |
| Tyre pressure monitoring system | ● | ● | ● | ● | ● | ● |
| Electronic engine immobiliser | ● | ● | ● | ● | ● | ● |
| Warning Triangle | ● | ● | ● | ● | ● | ● |
| Emergency call service | ● | ● | ● | ● | ● | ● |
| UNECE compliant | ● | ● | ● | ● | ● | ● |
| Advanced driver attention & drowsiness monitor | ● | ● | ● | ● | ● | ● |
| Dynamic Road Sign display | ● | ● | ● | ● | ● | ● |

Discover the optional upgrades for you.



Daytime Running Lights



Auto-dimming interior rearview mirror

Light & Vision Package

The Light and Vision Package is ideal for drivers who want enhanced clarity and confidence in every moment on the road. The auto-dimming interior mirror reduces glare automatically, while High-Beam Control 'Light Assist' optimises headlight use for better visibility. A multifunction camera and rain sensor adapt to changing conditions, and the separate daytime running lights with automatic headlight control and a Coming Home function ensure your path is always well lit—before, during and after every drive.

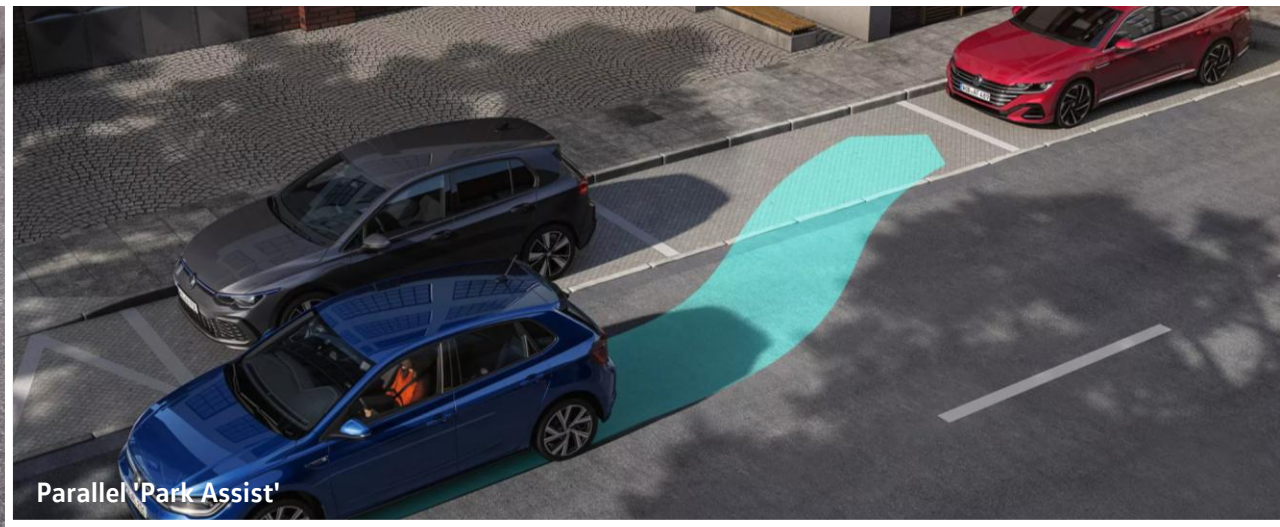
Includes:

- Auto-dimming interior rearview mirror
- High-beam control 'Light Assist'
- Multifunction Camera
- Rain sensor
- Separate daytime running light with automatic headlight control and Coming Home feature

Discover the optional upgrades for you. Discover more at [volkswagen.ie](https://www.volkswagen.ie)



Passenger Protection System



Parallel 'Park Assist'



Lane change assist

Driver Assistance Pack

The Driver Assistance Package is designed for those who want added confidence, convenience and protection on every journey. Lane Change Assist helps you manoeuvre safely by monitoring your surroundings, while Parallel Park Assist takes the stress out of parking in tight spaces. The integrated Passenger Protection System works in the background to prepare the vehicle in the event of a potential collision—helping safeguard occupants when it matters most.

Includes:

- Lane change assist
- Parallel 'Park Assist'
- Passenger Protection System



Discover the optional upgrades for you. Discover more at [volkswagen.ie](https://www.volkswagen.ie)



Standard ● Optional ○ Unavailable -

| | Base | Life | Edition 75 | Style | R-Line | R-Line 75 | Code |
|---|------|------|------------|-------|--------|-----------|---------|
| Functional | | | | | | | |
| Cruise Control | ○ | ○ | ○ | - | - | - | 8T6 |
| Floor Mats In Front And Rear | ○ | ○ | ○ | ● | ● | ● | 0TD |
| Light And Sight Package | - | ○ | ○ | - | ○ | ● | WLC |
| Keyless Access With Safelock | - | - | - | - | ○ | ○ | 4F2 |
| Keyless Access Without Safelock | - | - | - | - | ○ | ○ | 4I3 |
| Parking Package | ○ | - | - | - | - | - | WF1 |
| Front Fog Lights | ○ | - | - | - | - | - | 8WH |
| Anti-Theft Alarm System | - | ○ | ○ | ○ | ○ | ○ | WD1 |
| Space Saving Spare Wheel | - | - | - | ○ | ○ | ○ | PWG / F |
| Driver Assistance Systems | | | | | | | |
| Front and Rear Parking Sensors | - | ○ | ○ | ● | ● | ● | 7X2 |
| Rear View Camera | - | ○ | ● | ● | ● | ● | KA1 |
| Driver Assistance Pack | - | ○ | ○ | - | ○ | ● | PF2 |
| Sports Package | - | - | - | ○ | ○ | ○ | PDA |
| Styling | | | | | | | |
| Panoramic Sunroof | - | - | - | - | ○ | ○ | 3FB |
| Style Package | - | - | - | ○ | ○ | ○ | PDR |
| Led Matrix Headlights | - | - | - | ● | ○ | ○ | PXA |
| Privacy Glass | - | - | ● | - | ○ | ● | 4KF |
| Audio and Navigation | | | | | | | |
| App-Connect Wireless For Apple Carplay And Android Auto | ○ | - | ● | - | - | - | 9WJ |
| Discover Media Navigation System | - | - | - | ● | ○ | ○ | RBF |
| We Connect Plus | - | ○ | ○ | - | - | - | YOS |
| Digital Cockpit Pro | - | - | - | - | ○ | ○ | 9S0 |
| Comfort | | | | | | | |
| Heated Seats In Front | - | - | - | ○ | ○ | ○ | 4A3 |

| | Base | Life | Edition 75 | Style | R-Line | R-Line 75 | Code |
|-----------------------------|------|------|------------|-------|--------|-----------|------|
| Alloys | | | | | | | |
| 15" 'Essex' alloy wheels | ● | ● | ● | - | - | - | U55 |
| 15" Ronda Alloy Wheels | - | - | - | ● | - | - | U54 |
| 16" 'Torsby' Alloy wheels | - | ○ | ○ | - | - | - | PI7 |
| 16" 'Palermo' Alloy wheels | - | - | - | ○ | - | - | PI5 |
| 16" 'Coventry' alloy wheels | - | - | - | - | ● | ● | C1W |
| 17" 'York' Alloy Wheels | - | - | - | - | ○ | ● | PJE |



15" 'Essex'



15" Ronda



16" "Torsby"



16" Palermo



16" 'Coventry'



17" 'York'



Discover the colour for you. Discover more at [volkswagen.ie](https://www.volkswagen.ie)

Standard ● Optional ○ Unavailable -

| | Base | Life | Edition 75 | Style | R-Line | R-Line 75 | Code |
|------------------------------------|------|------|------------|-------|--------|-----------|------|
| Exterior Colours | | | | | | | |
| Kings Red Metallic | ○ | ○ | ○ | ○ | ○ | ○ | P8P8 |
| Reef Blue Metallic | ○ | ○ | ○ | ○ | ○ | ○ | 0A0A |
| Reflex Silver Metallic | ○ | ○ | ○ | ○ | ○ | ○ | 8E8E |
| Smoke Grey | ○ | ○ | ○ | ○ | ○ | ○ | 5W5W |
| Vibrant Violet | ○ | ○ | ○ | ○ | ○ | ○ | 7J7J |
| Deep Black Pearl Effect | ○ | ○ | ○ | ○ | ○ | ○ | 2T2T |
| Ascot Grey | ○ | ○ | ○ | ○ | ○ | ○ | 6U6U |
| Pure White | ○ | ○ | ○ | ○ | ○ | ○ | 0Q0Q |
| Interior Colours | | | | | | | |
| Slash / Austin cloth - Titan Black | ● | ● | ● | - | - | - | EL |
| Tracks cloth - Titan Black | - | - | - | ● | - | - | FJ |
| Karoso ArtVelours / Titan Black | - | - | - | - | ● | ● | WS |





Discover technical data. Discover more at [volkswagen.ie](https://www.volkswagen.ie)

| | 1.0 MPI 80HP1 | 1.0 TSI 95HP1 | 1.0 TSI 95HP1 |
|---|-----------------------|----------------|-------------------|
| Engine | | | |
| Gearbox type | 5 speed manual | 5 speed manual | 7 speed Automatic |
| Engine type | Three Cylinder Petrol | Petrol | Petrol |
| Fuel tank capacity, ltrs | 40 | 40 | 40 |
| Cubic capacity, ltrs/cc | 1.0/999 | 1.0/999 | 1.0/999 |
| Max. output, kW/HP | 59kW / 80HP | 70kW / 95HP | 70kW / 95HP |
| Max. torque, Nm | 93 | 175 | 175 |
| Performance | | | |
| Top speed, km/h, where the law permits: | 171 | 188 | 188 |
| Acceleration, secs 0 – 100km/h: | 15.6 | 10.8 | 11.5 |
| WLTP: (Min-Max) | | | |
| Low speed consumption | 6.6 | 6.6- 6.6 | 6.8- 6.8 |
| Medium speed consumption | 5 | 5.1 - 5.1 | 5.2 - 5.3 |
| High speed consumption | 4.6 | 4.5 - 4.5 | 4.6 - 4.7 |
| Extra high speed consumption | 5.7 | 5.3 - 5.4 | 5.5 - 5.6 |
| Combined speed consumption | 5.3 | 5.2 - 5.2 | 5.3- 5.4 |
| WLTP Emissions Combined,CO2 g/km: | 119 | 118 - 119 | 122 - 129 |
| Emission class | EURO 6 EB | EURO 6 EB | EURO 6 EB |

- VRT Bands and rate of Annual Road Tax are valid as of 1st January 2022 and calculated from the base model WLTP values for model year 2026 cars produced from CW48/2025 onwards. All vehicles with TBC are subject to EU type approval and with that were not available at time of going to print.
- The specified fuel consumption and emission values are the official figures obtained from tests under standardised EU test conditions in accordance with the Worldwide Harmonized Light Vehicles Test Procedure (WLTP). The above values reflect the standard vehicle excluding additional equipment such as optional extras and accessories which may have an effect on the fuel consumption (l/100km) and CO₂ emissions produced. WLTP range values for standard vehicles may vary depending on equipment. In practice, the actual range varies depending on driving style, speed, use of convenience/ auxiliary equipment, outside temperature, number of passengers/additional load, and topography. To discover exact values please configure your desired vehicle at [volkswagen.ie/build](https://www.volkswagen.ie/build). You can discover more about the WLTP at [volkswagen.ie/wltp](https://www.volkswagen.ie/wltp).
- Importantly note that the rate at which your vehicle pays Vehicle Registration Tax may increase as a result of your vehicle configuration. For more information, please consult your local Authorised Volkswagen retailer.
- In accordance with (EU) 2020/740 ("Tire Labeling Regulation"), please visit [volkswagen.ie](https://www.volkswagen.ie) configurator for details relating to the tyres applicable to said vehicles.
- Please note every effort has been made to ensure the contents of this publication (including RRP, CO₂, fuel consumption and technical information) were accurate and up-to-date upon publishing on May 20th 2026. Volkswagen Ireland reserves the right to change specification, prices and withdraw products from sale without notice. Any such alternations will be notified to Volkswagen Retailers at the earliest opportunity. Please consult your local Authorised Volkswagen retailer for the latest product information.

Discover more at [volkswagen.ie](https://www.volkswagen.ie)

